

PSMD5 Antibody (monoclonal) (M01)**Mouse monoclonal antibody raised against a partial recombinant PSMD5.****Catalog # AT3470a****Specification**

PSMD5 Antibody (monoclonal) (M01) - Product Information

Application	WB, IHC, E
Primary Accession	Q16401
Other Accession	BC014478
Reactivity	Human
Host	mouse
Clonality	Monoclonal
Isotype	IgG1 Kappa
Calculated MW	56196

PSMD5 Antibody (monoclonal) (M01) - Additional Information**Gene ID** 5711**Other Names**

26S proteasome non-ATPase regulatory subunit 5, 26S protease subunit S5 basic, 26S proteasome subunit S5B, PSMD5, KIAA0072

Target/Specificity

PSMD5 (AAH14478, 405 a.a. ~ 504 a.a) partial recombinant protein with GST tag. MW of the GST tag alone is 26 KDa.

Dilution

WB~~1:500~1000

IHC~~1:100~500

E~~N/A

Format

Clear, colorless solution in phosphate buffered saline, pH 7.2 .

Storage

Store at -20°C or lower. Aliquot to avoid repeated freezing and thawing.

Precautions

PSMD5 Antibody (monoclonal) (M01) is for research use only and not for use in diagnostic or therapeutic procedures.

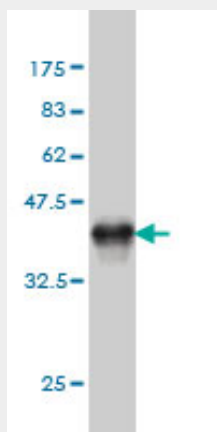
PSMD5 Antibody (monoclonal) (M01) - Protocols

Provided below are standard protocols that you may find useful for product applications.

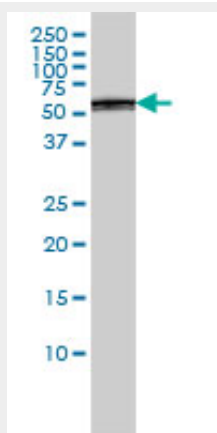
- [Western Blot](#)

- [Blocking Peptides](#)
- [Dot Blot](#)
- [Immunohistochemistry](#)
- [Immunofluorescence](#)
- [Immunoprecipitation](#)
- [Flow Cytometry](#)
- [Cell Culture](#)

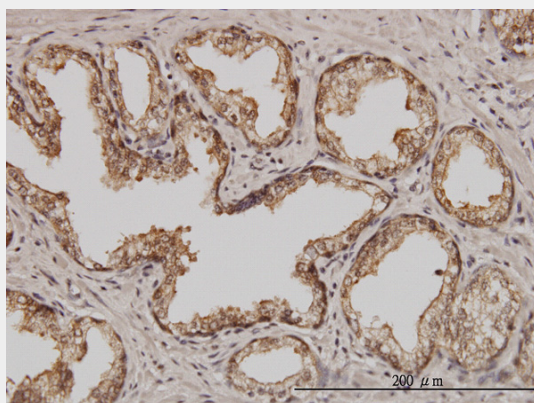
PSMD5 Antibody (monoclonal) (M01) - Images



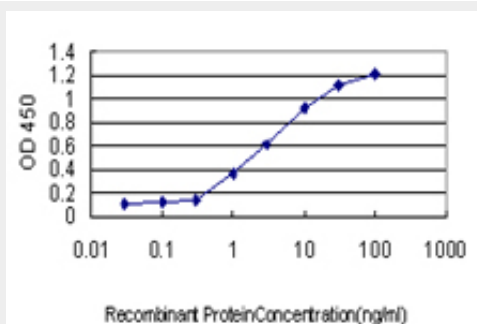
Antibody Reactive Against Recombinant Protein. Western Blot detection against Immunogen (36.74 kDa) .



PSMD5 monoclonal antibody (M01), clone 3E2 Western Blot analysis of PSMD5 expression in A-431 ((Cat # AT3470a)



Immunoperoxidase of monoclonal antibody to PSMD5 on formalin-fixed paraffin-embedded human prostate. [antibody concentration 3 ug/ml]



Detection limit for recombinant GST tagged PSMD5 is approximately 0.1ng/ml as a capture antibody.

PSMD5 Antibody (monoclonal) (M01) - Background

The 26S proteasome is a multicatalytic proteinase complex with a highly ordered structure composed of 2 complexes, a 20S core and a 19S regulator. The 20S core is composed of 4 rings of 28 non-identical subunits; 2 rings are composed of 7 alpha subunits and 2 rings are composed of 7 beta subunits. The 19S regulator is composed of a base, which contains 6 ATPase subunits and 2 non-ATPase subunits, and a lid, which contains up to 10 non-ATPase subunits. Proteasomes are distributed throughout eukaryotic cells at a high concentration and cleave peptides in an ATP/ubiquitin-dependent process in a non-lysosomal pathway. An essential function of a modified proteasome, the immunoproteasome, is the processing of class I MHC peptides. This gene encodes a non-ATPase subunit of the 19S regulator base.

PSMD5 Antibody (monoclonal) (M01) - References

Assembly pathway of the Mammalian proteasome base subcomplex is mediated by multiple specific chaperones. Kaneko T, et al. Cell, 2009 May 29. PMID 19490896. Chaperone-mediated pathway of proteasome regulatory particle assembly. Roelofs J, et al. Nature, 2009 Jun 11. PMID 19412159. Hsm3/S5b participates in the assembly pathway of the 19S regulatory particle of the proteasome. Le Tallec B, et al. Mol Cell, 2009 Feb 13. PMID 19217412. Toward a confocal subcellular atlas of the human proteome. Barbe L, et al. Mol Cell Proteomics, 2008 Mar. PMID 18029348. Characterization of the interactome of the human MutL homologues MLH1, PMS1, and PMS2. Cannavo E, et al. J Biol Chem, 2007 Feb 2. PMID 17148452.